



## Save water, money & the environment with every flush

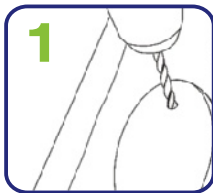
Cannot be used in WCs with dual flush option. Only suitable for pre-2001 toilet cisterns.

Flush-wiser works by allowing your toilet siphon to fill with air instead of water - the more air in..... the more water saved! This unique design is fixed to the siphon therefore will not interfere with the toilet's flushing mechanisms, it is totally adjustable and will last the lifetime of your cistern.

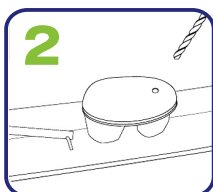
### Quick and easy to install



Ensure water supply to toilet is turned off and empty cistern of water before you commence with drilling.



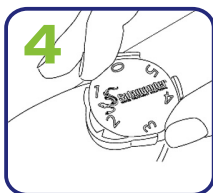
**1** Insert a **7mm** drill bit into your drill. Note: it is very important to use the correct drill bit size.



**2** Using the 7mm drill bit, drill a hole in the top of the siphon, drill into the plastic only enough to break through the top of the siphon.

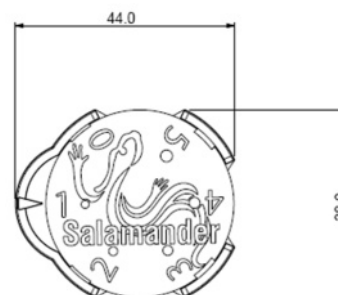
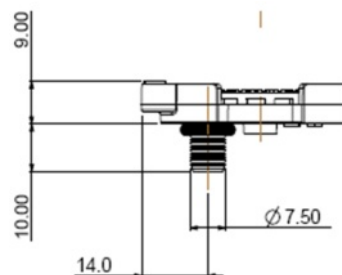


**3** Insert flush-wiser into the hole in the siphon.



**4** Line up number with arrow to give water saving. A higher number results in more water saved. For a typical 9 litre system, hole 3 saves up to 3 litres.\*

\* Water savings vary dependent upon the cistern, siphon and toilet type. Protect against electrical hazards, please be careful when using electrical items near water.



Salamander (Engineering) Ltd,  
The Heath Business and Technical  
Park, Runcorn, Cheshire, WA7 4QX  
Telephone: 01928 583280  
www.flush-wiser.net

Distributed in the UK by  
Salamander (Engineering) Ltd.  
Product designed &  
manufactured by  
PHS Group plc

